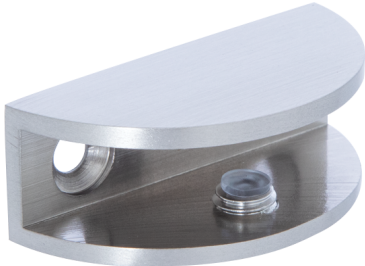


Item # Z-SC12



Max Capacities 5" Glass Protution from wall is recommended, unless used in a corner shelf.

Rounded Shelf Clamp

GLASS REQUIREMENTS:

- 3/8" (10mm) Tempered Glass
- 3/8" (10.38mm) Laminated Glass
- 1/2" (12mm) Tempered Glass

SPECIFICATIONS:

- Material: Solid Brass
- No holes required on Glass

CARES:

- Can be cleaned with water and a soft cloth
- Use of harsh or abrasive cleaners may harm finish and will void the warranty.
- Do not use power tools when installing or spray lubricant on these clamps.

FEATURES:

- For a corner shelf combine with Tempered Glass half Round Shelve (T-SHX16)

AVAILABLE FINISHES:

